

Port Albert (oppo

McM

East Port Welshpool 4 - One Tree Is

East Port Welshpool 2

Bullock Island

East Port Welshpool 1

Snake Island NE (Swashman)

One Tree Island - G2 - now S

Sunday Island west end

Snake Island (the Gulf)

East Sund

Corner Inlet

Port Albert Ent

Snake Island (east side) - G3 - no

© 2009 Cnes/Spot Image
Data SIO, NOAA, U.S. Navy, NGA, GEBCO
Image © 2009 DigitalGlobe
Image © 2009 TerraMetrics

© 2009 Google

38°43'27.15" S 146°32'43.91" E

Eye alt 16.28 km



Port Albert (opposite Old Settlement Beach)

Manns Beach

McMillan Bay

Robertsons Beach

Dog Island south - M

Box Bank Island - F

Kate Kearney Entrance

Clonmel Island - D

East Sunday Island / Drum Island - A

Port Albert Entrance

Port Albert Entrance

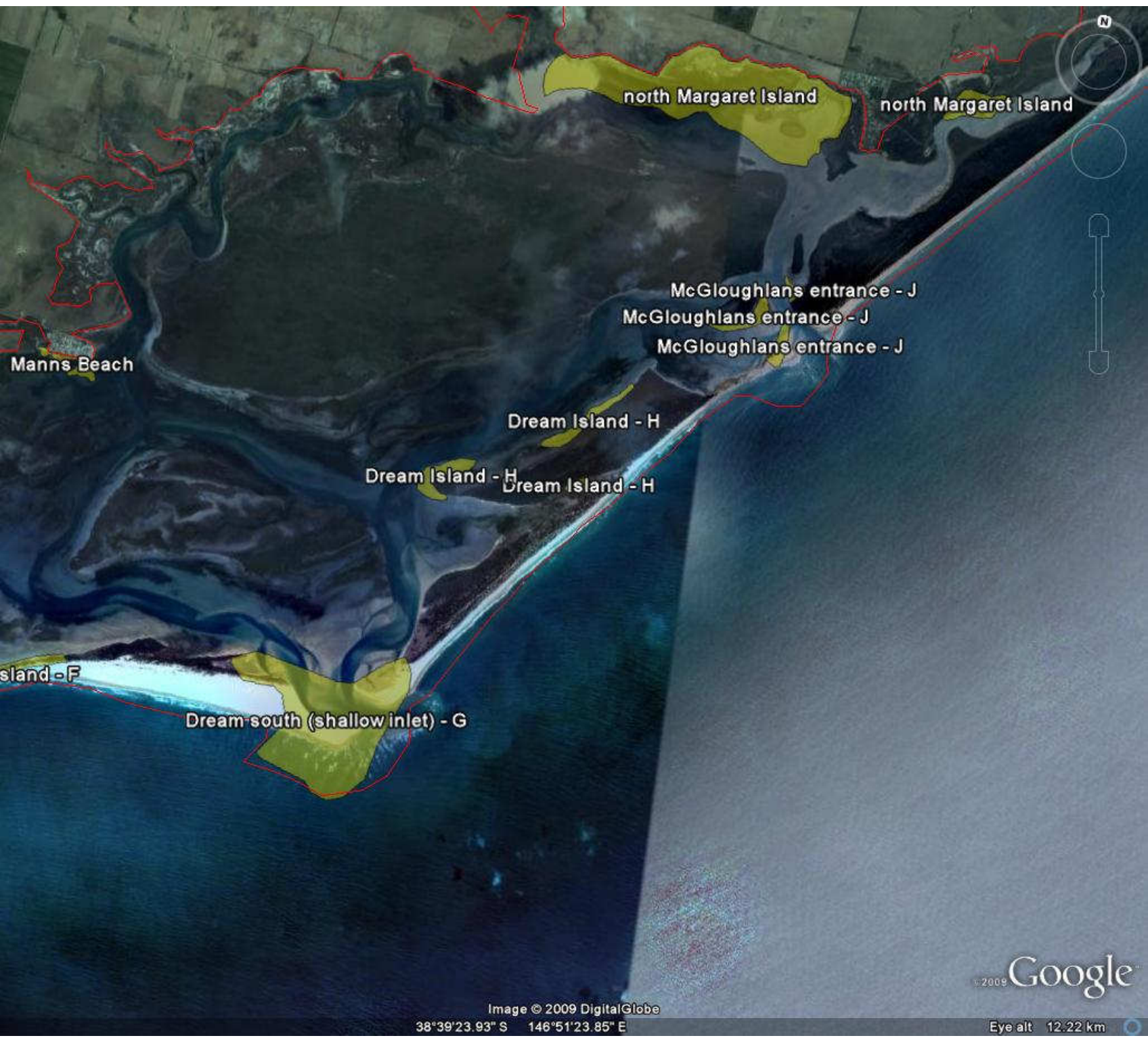
(de) - G3 - now B

© 2009 Cnes/Spot Image
Data SIO, NOAA, U.S. Navy, NGA, GEBCO

© 2009 Google

Image © 2009 DigitalGlobe
38°41'29.62" S 146°42'59.53" E

Eye alt 13.52 km



north Margaret Island

north Margaret Island

McGloughlans entrance - J
McGloughlans entrance - J
McGloughlans entrance - J

Dream Island - H

Dream Island - H
Dream Island - H

Manns Beach

island - F

Dream-south (shallow inlet) - G

© 2009 Google

Image © 2009 DigitalGlobe
38°39'23.93" S 146°51'23.85" E

Eye alt 12.22 km